

Rhapsody Cushions

Finished size 20" x 20" (50 x 50cms)

Designed by Lynne Goldsworthy of lilysquilts.blogspot.com
using the Rhapsody collection from Makower UK www.makoweruk.com



Cushion A



Cushion B

Fabric requirements for one cushion

Fabric	Cushion A	Cushion B	Description	Amount	Cut
A	2175/B	2175/X	Stripe	FQ	One 12" square
B	2182/Q	2182/Y	Scroll	FQ	Eight 1 1/4" x 10" strips Eight 1 1/4" x 13" strips
C	2176/B	2176/T	Triangles	FQ	Four 1 3/4" x 12" strips
D	2177/B8	2177/X	Dotty Reeds	FQ	Four 2 1/2" x 15" strips
E	2179/B	2179/X	Squares		Four 1 3/4" x 12" strips
F	2178/B	2178/T	Flowers	F8th	Two 8" squares cut in half on the diagonal
Binding	2179/B	2179/X	Squares	FQ	Four 2 1/2" WOFQ strips
Backing	2180/B	2180/T	Trees	3/4 m/ yd	One 11" x 22" and one 15" x 22" rectangle (cut portrait style)
Templates; Five of each of templates A1/B1 and A2/B2					
Wadding; 24" square / 60cm square 279 Cotton Mix 80-20 from http://www.vlieseline.com/en					
Threads; Aurifil 50wt for piecing and 40wt for quilting from http://www.aurifil.com					

Notes:

- Read the pattern in full before starting.
- $\frac{1}{4}$ " seams are used throughout except where stated otherwise.
- Press after each seam, pressing seams open or to one side as preferred.
- WOF - width of fabric - a strip of fabric cut from selvedge to selvedge or from the selvedge to the centre cut on a FQ or F8th (WOFQ).
- We do not add a backing to our pillow front but, if you prefer to add a fabric backing, you will need a 24" square of some scrap fabric.
- This pattern uses foundation paper piecing. If you are not familiar with this technique, we suggest practicing on scraps first and the following online tutorial is a useful guide:
- <http://www.lovepatchworkandquilting.com/blog/foundation-paper-piece>
- Make sure to visit <http://www.makoweruk.com/projects/> to ensure you are working from the most up-to-date version of the pattern.

Making the cushion

1. Follow the fabric layout in the main image and fig 1 and cut the fabrics as shown in the fabric requirements table.
2. Tape together the five pairs of templates at the red line. Four A templates (black) will be used to paper piece the four sections of the cushion front. One B template (red) will be used to cut out the centre square for each cushion front.
3. Use the B (red) template as shown in figs 2 and 3 to trim the centre square to a diamond shape.
4. Foundation paper piece the four A templates using the fabrics as listed out in fig 1, trim to the dashed lines and remove the papers from the back.
5. Sew the four A template pieces to the centre B template piece using Y seams and taking care to ensure that the corner triangles are all the right way up.

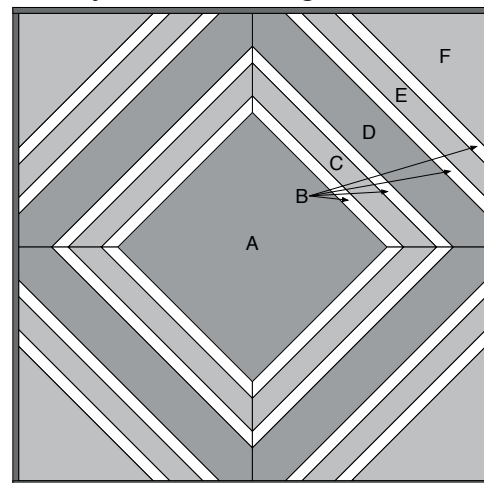


fig 1

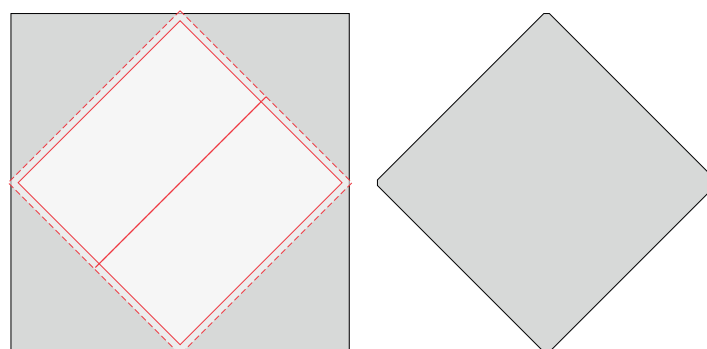
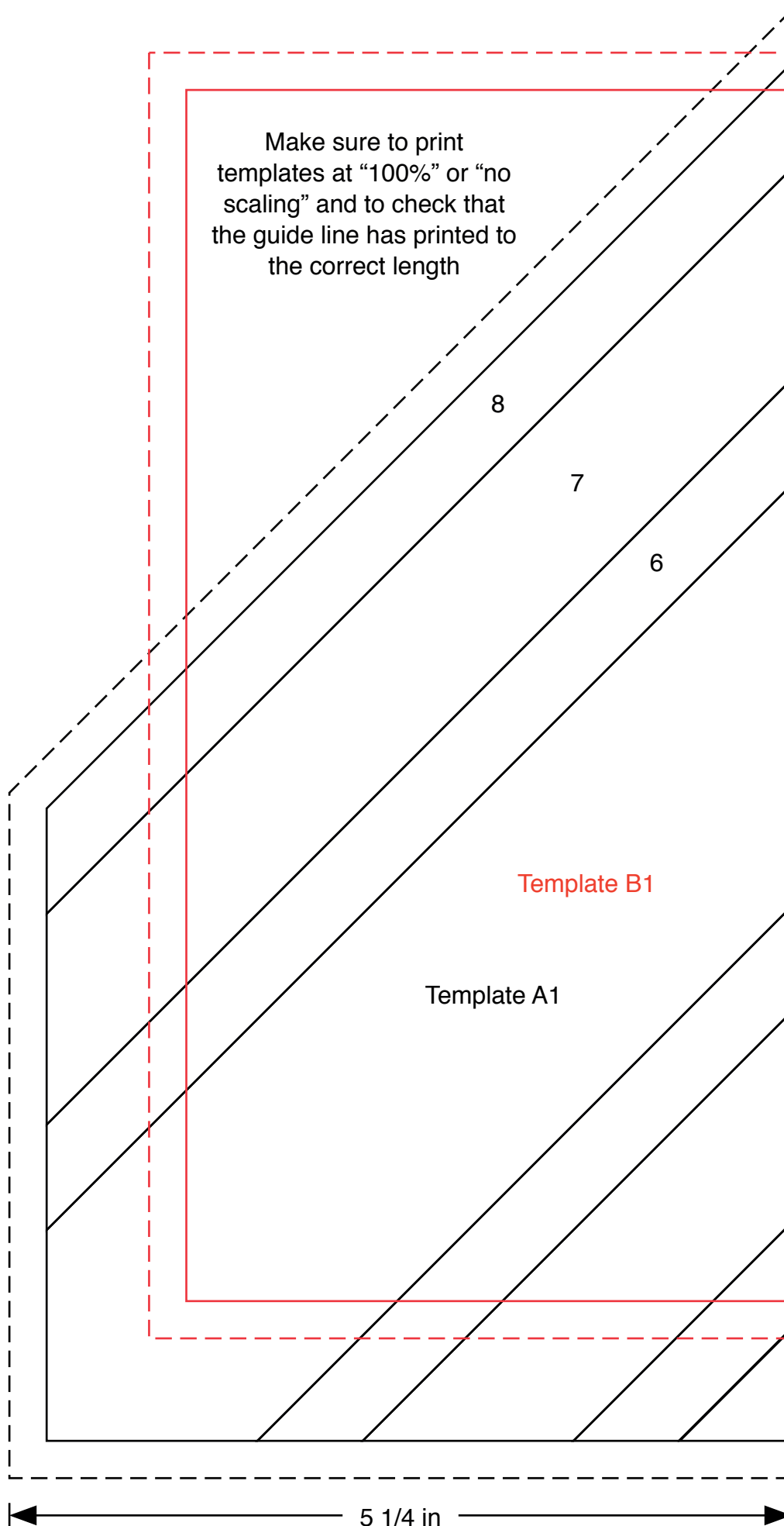
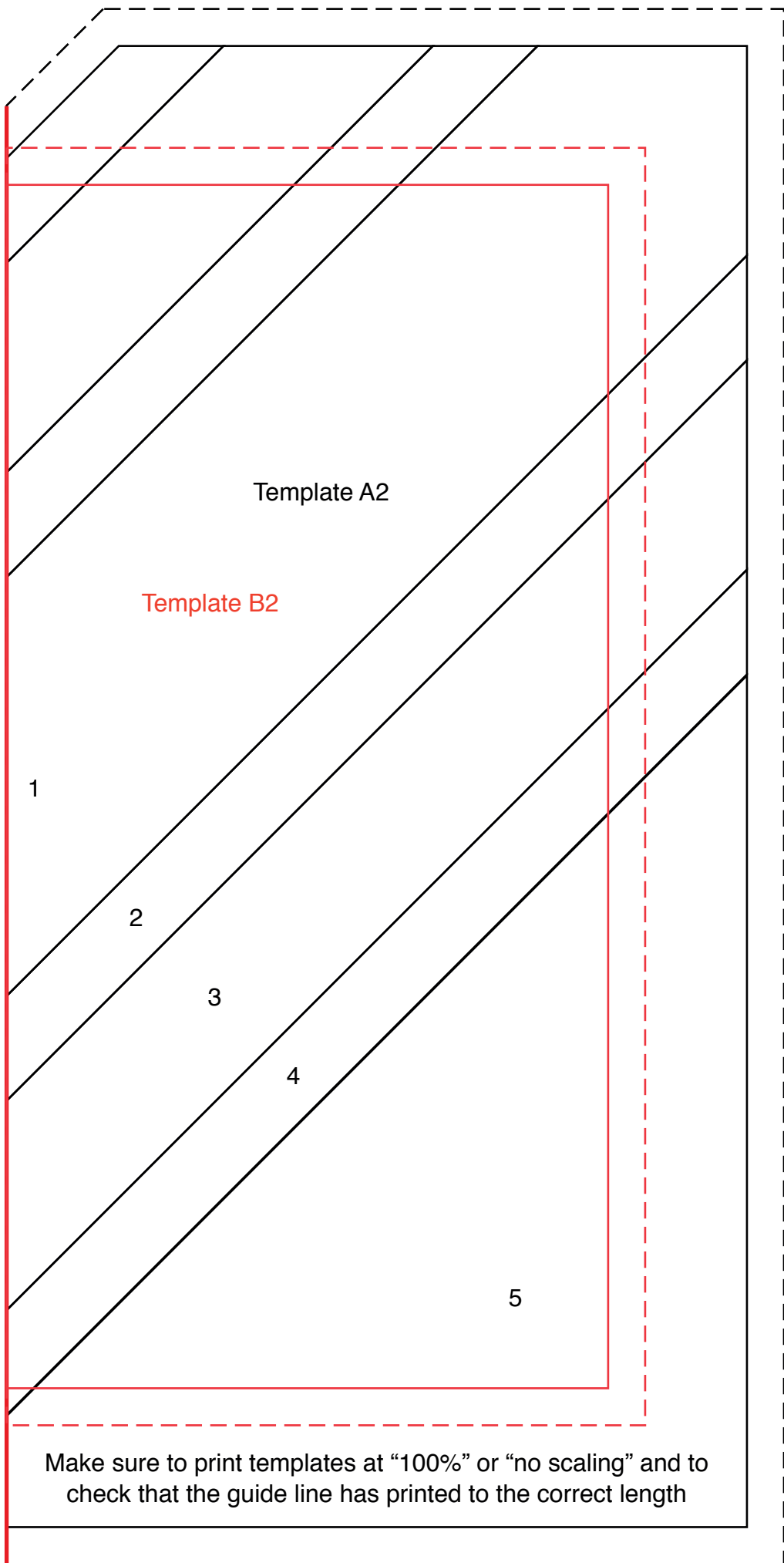


fig 2-3

Finishing the cushion

1. Sew the binding strips end to end using diagonal or straight seams as preferred and press wrong sides together along the length to make a double fold binding.
2. Make a quilt sandwich, basting together the back (if you are using a back), the wadding and the top.
3. Quilt as desired then trim square, removing excess wadding and backing. We quilted a diagonal cross-hatch of lines approximately $\frac{3}{4}$ " apart using a white 40wt Aurifil thread on the front and back.
4. Hem one vertical edge of each of the backing pieces – hem the right side of one piece and the left side of the other piece.
5. Overlap one backing piece over the other, pin to the cushion front, wrong sides together, zigzag around the four edges to secure and trim away excess backing fabric.
6. Bind, taking care to mitre the corners.





Template A2

Template B2

1

2

3

4

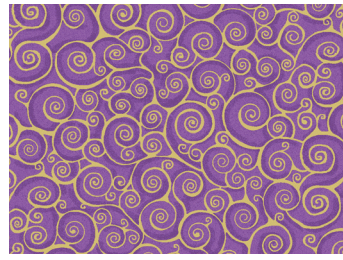
5

Make sure to print templates at "100%" or "no scaling" and to check that the guide line has printed to the correct length

5 1/4 in



2175/B Wavy Stripe



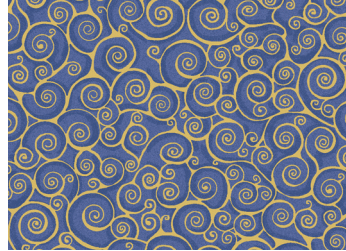
2182/P Scroll



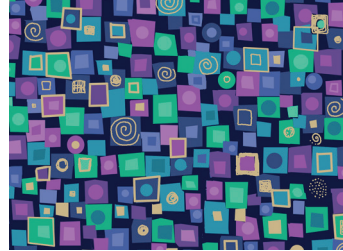
2176/B Triangles



2178/B Flowers



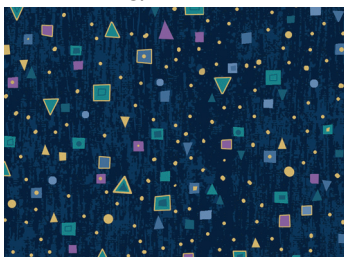
2182/L Scroll



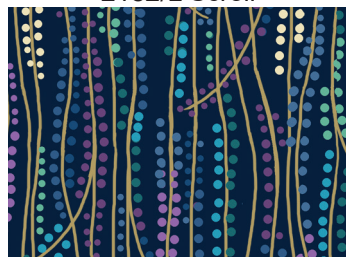
2179/B Squares



2180/B Trees



2181/B Mini Geo



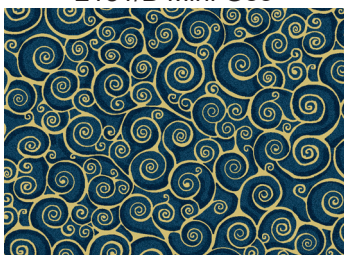
2177/B8 Dotty Reeds



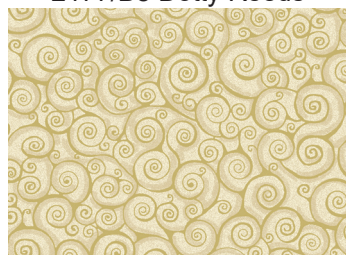
2182/B4 Scroll



2177/B2 Dotty Reeds



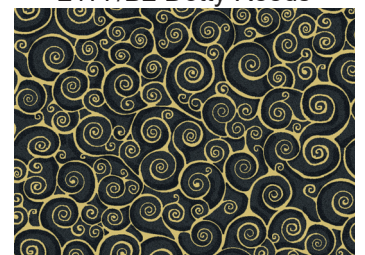
2182/B9 Scroll



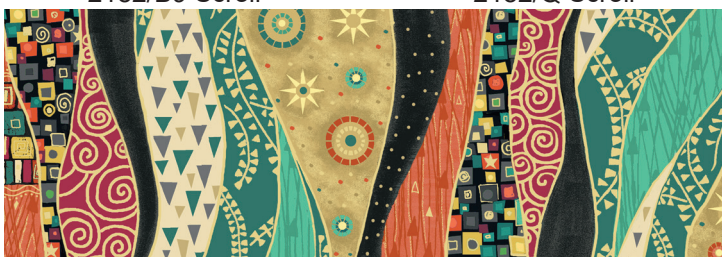
2182/Q Scroll



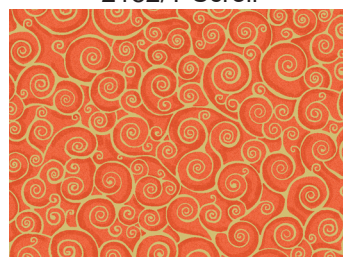
2182/T Scroll



2182/X Scroll



2175/X Wavy Stripe



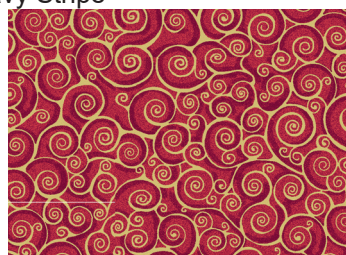
2182/N Scroll



2176/T Triangles



2178/T Flowers



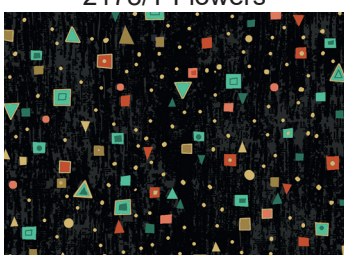
2182/R Scroll



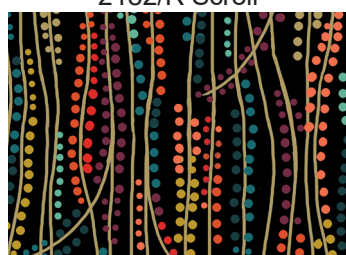
2179/X Squares



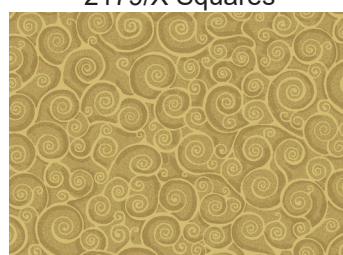
2180/T Trees



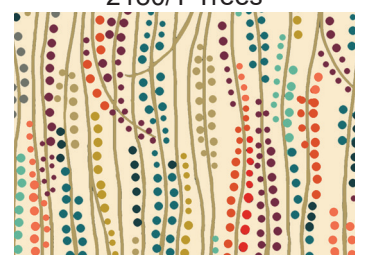
2181/X Mini Geo



2177/X Dotty Reeds



2182/Y Scroll



2177/Q3 Dotty Reeds